

Installation Instructions

Woodland Fort

Part # AP018



Specifications: Woodland Fort

- Material: Concrete with Structural Foam
- Approximate Uninstalled Size: 22'-10" x 8'-6" x 9'-5" Tall
- Approximate Weight: 11,800 lbs
- Maximum Fall Height: 8'-1" (assumes 12" safety surfacing)
- Age Group: 5-12 Years Old

Required Parts (included):

- Woodland Fort GFRSC Sculpture
- Bolt Hangers (Lifting Eyes): 4ct
- Woodland Fort Net (OEM-IDS_014) and Hardware
- 1/2" x 8-1/2" SS Wedge Anchors (Rope Anchors): 3ct
- "Woodland Fort" Drawing Set

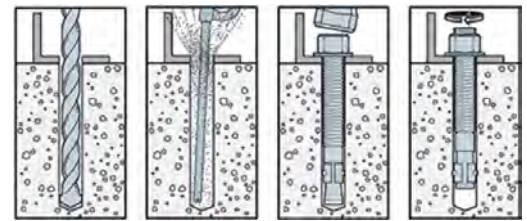
Recommended Equipment (not included):

- 12' Lifting Straps: 4ct
- Ratchet Strap: 1ct
- 9' Spreader Bar
- Lift: Reach Type Forklift or Crane 12,000 lb Capacity
- 1/2" Quick Links: 4ct
- 10" Hammer Drill with 1/2" Bit
- Wrench Set / Socket Set
- Allen Key Set
- Shovels or Skid Steer with 16" Auger
- Grinder with Cutoff Wheel or Hack Saw

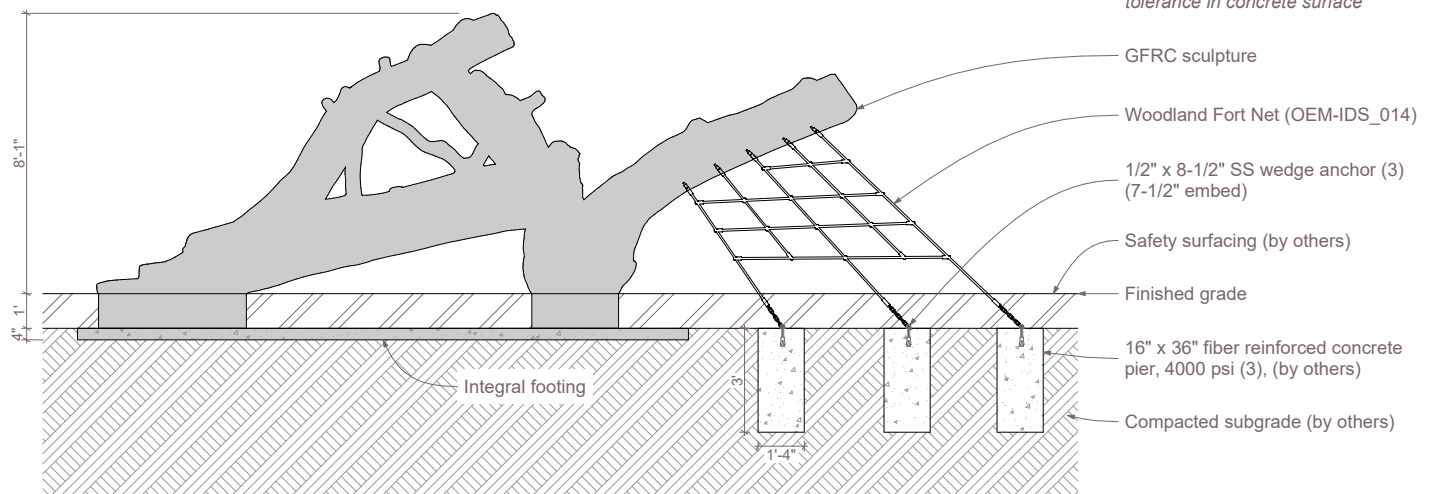


Important Notes:

- *Warning: Installation over a hard surface such as asphalt, or packed earth may result in serious injury or death from falls.*
- *It is the responsibility of the installer to ensure all components are installed in compliance with ASTM F-1487.*
- *All site built footings should be allowed to cure for a minimum of 48 hours prior to installation.*



Typical Wedge Anchor Installation



Note:
When determining critical fall height please allow for +/- 2" tolerance in concrete surface

Installation Instructions

Woodland Fort

Part # AP018

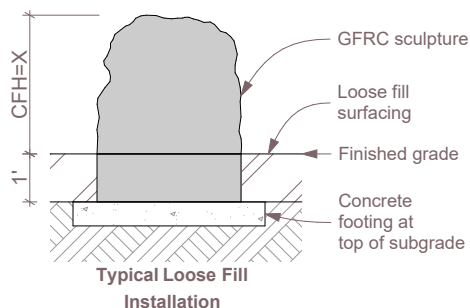


591 South Boulevard Street
Gunnison, Colorado 81230
info@idsculpture.com
970-641-1747

PRE-INSTALL CHECKLIST

Please review prior to ordering and installing ID Sculpture products.

- ☐ 1. Verify that you have the recommended lifting equipment to unload and install your component, as specified by the installation instructions. Please check the installation instructions for the weight of each component and shipping dimensions.
- ☐ 2. Develop a proper plan to access the site and control access prior to opening.
- ☐ 3. Call your local utilities to locate any potential existing below grade equipment?
- ☐ 4. FOR ALL SCULPTURES: Verify you have accounted for adjustments to the footing depth based on your choice of safety surfacing material. Footing depth must be adjusted to compensate for the depth/thickness requirements of the selected safety surfacing (*see diagrams below*). Layout drawings show the uninstalled dimensions of the component. If you require a modification to a standard component, please notify ID Sculpture when placing your order. *Additional charges may apply.*



*Critical Fall Height (CFH)

- ☐ 5. Verify that you have installed any required footings prior to the arrival of your sculptures. Please note, footings should be allowed to cure for a minimum of 7 days.

Important Safety Note:

Please install and maintain adequate protective surfacing under and around your equipment. Never let children play on the equipment before protective surfacing is installed. Please consult ASTM F1487 for more information.

Installation Instructions

Woodland Fort

Part # AP018



Sculpture Installation:

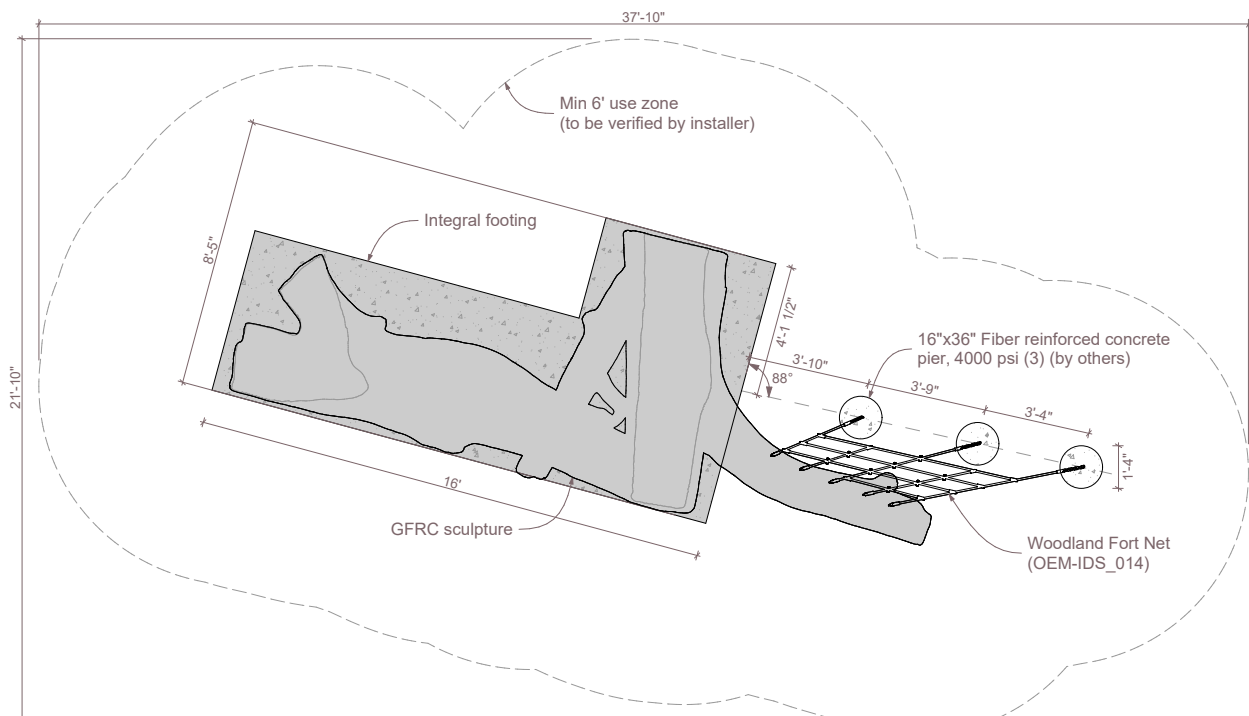
1. Excavate the site 4" below the top of subgrade as per the provided layout drawings.
2. Compact the subgrade beneath the sculpture, level using sand as necessary.
3. Make sure that the Bolt Hanger / lifting eyes (4ct) are securely attached to the bolts protruding from the base of the sculpture. Secure the (4) 12' lifting straps to Bolt Hangers using 1/2" quick links. (refer to rigging layout)
4. Lift the sculpture using an appropriate reach forklift or crane taking care to equalize the load on straps (this sculpture picks heavy on one end, take care to insure that it picks level by adjusting spreader bar pick point (approximately 12" off center)
5. Set the sculpture in place and verify layout and all use zones as required by ASTM 1487.
6. Remove bolt hangers.
7. Backfill so the subgrade is level with the top of the integral footing and compact as necessary.

591 South Boulevard Street
Gunnison, Colorado 81230
info@idsculpture.com
970-641-1747

Net Installation:

8. Locate the footings for the ground net connections based on included drawing set, excavate and pour footings.
9. Connect net to GRFC sculpture with provided Igloo rope connector & connection pin.
10. Locate the chain connection points by pulling chain in line with the net and mark holes. Remove excess chain links as necessary.
11. Drill and clean holes (3) with a 1/2" bit in the marked locations on the footer to a minimum depth of 7".
12. Secure the supplied 1/2" x 8-1/2" SS Wedge Anchors (3) leaving 1-1/2" of thread exposed above footing.
13. Connect chain to the wedge anchor following detail. Trim anchor stud flush with top of nut.
14. Install resilient surfacing material in accordance with layout guidelines and ASTM standards.

*Never install any rope component taut, some slack should be present.



Plan

Installation Instructions

Woodland Fort

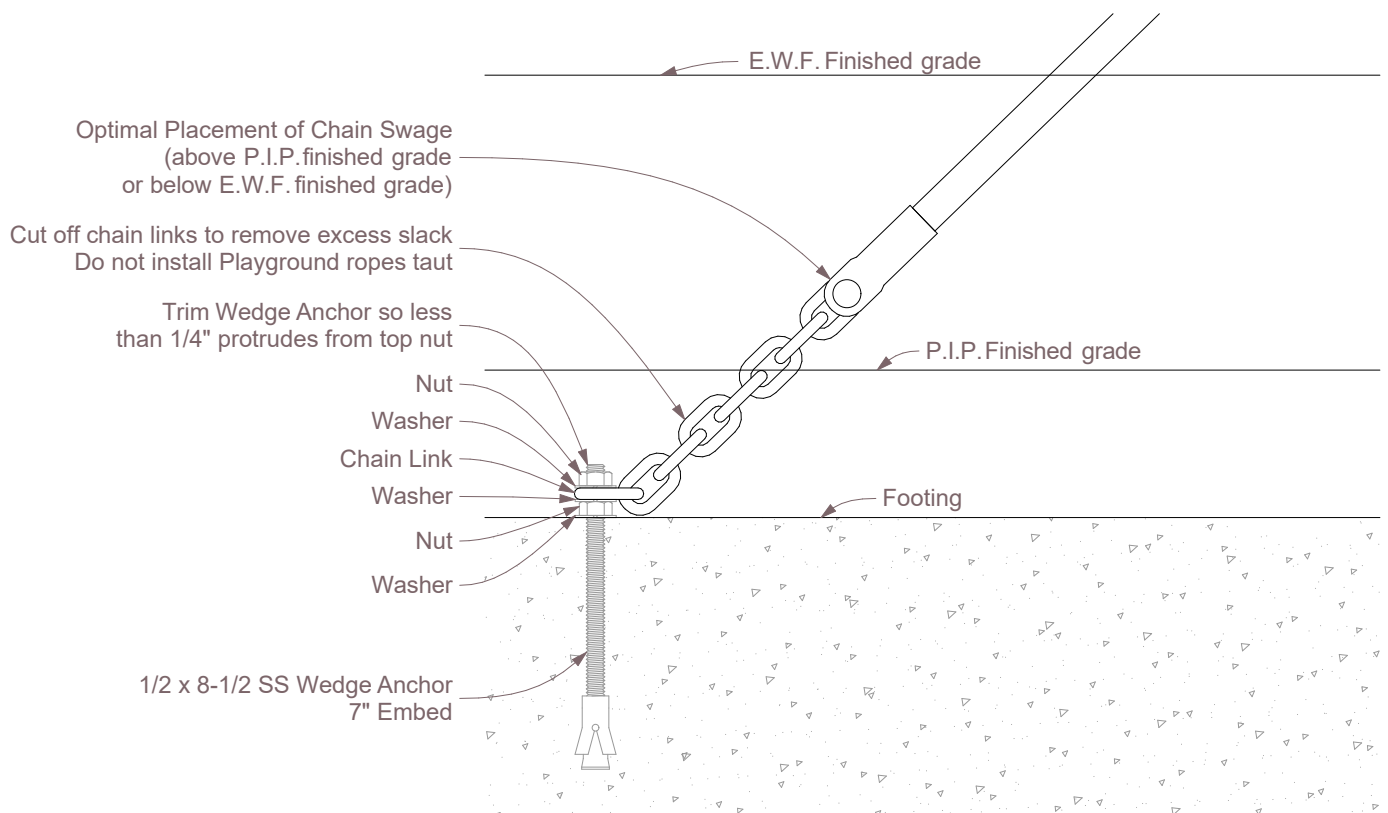
Part # AP018



ID SCULPTURE

PLAY. CLIMB. EXPLORE.

591 South Boulevard Street
Gunnison, Colorado 81230
info@idsculpture.com
970-641-1747



Rope to Footing Connection Detail



Female Threaded Connection



Installed Connector

Installation Instructions

Woodland Fort

Part # AP018



ID SCULPTURE

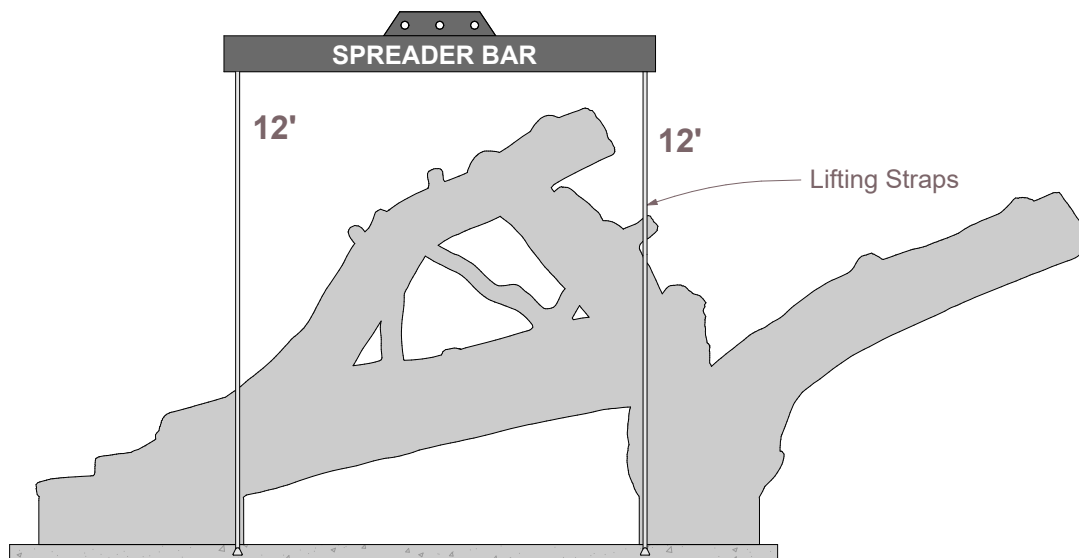
PLAY. CLIMB. EXPLORE.

591 South Boulevard Street

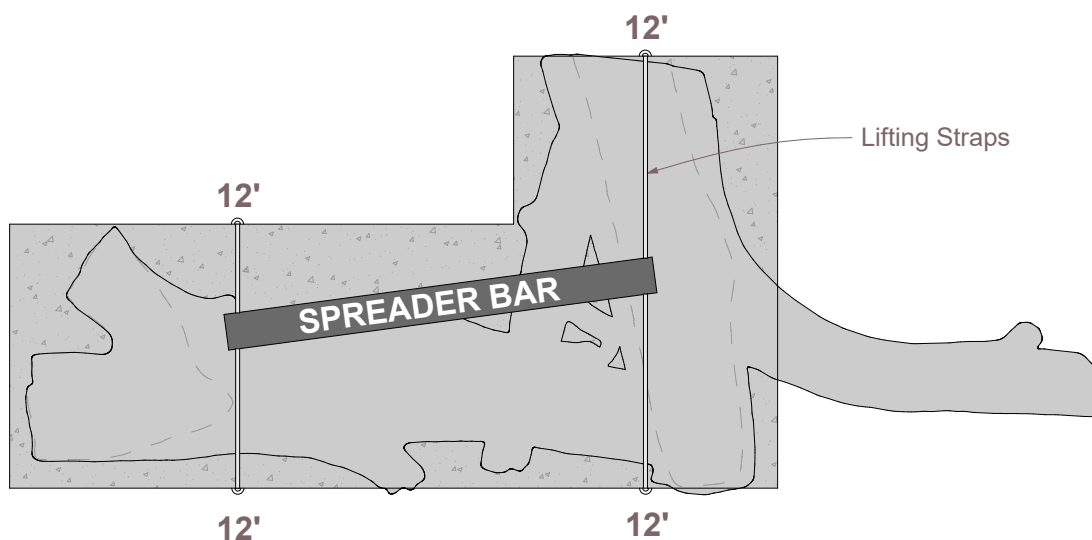
Gunnison, Colorado 81230

info@idsculpture.com

970-641-1747



Rigging Layout



Rigging Layout